

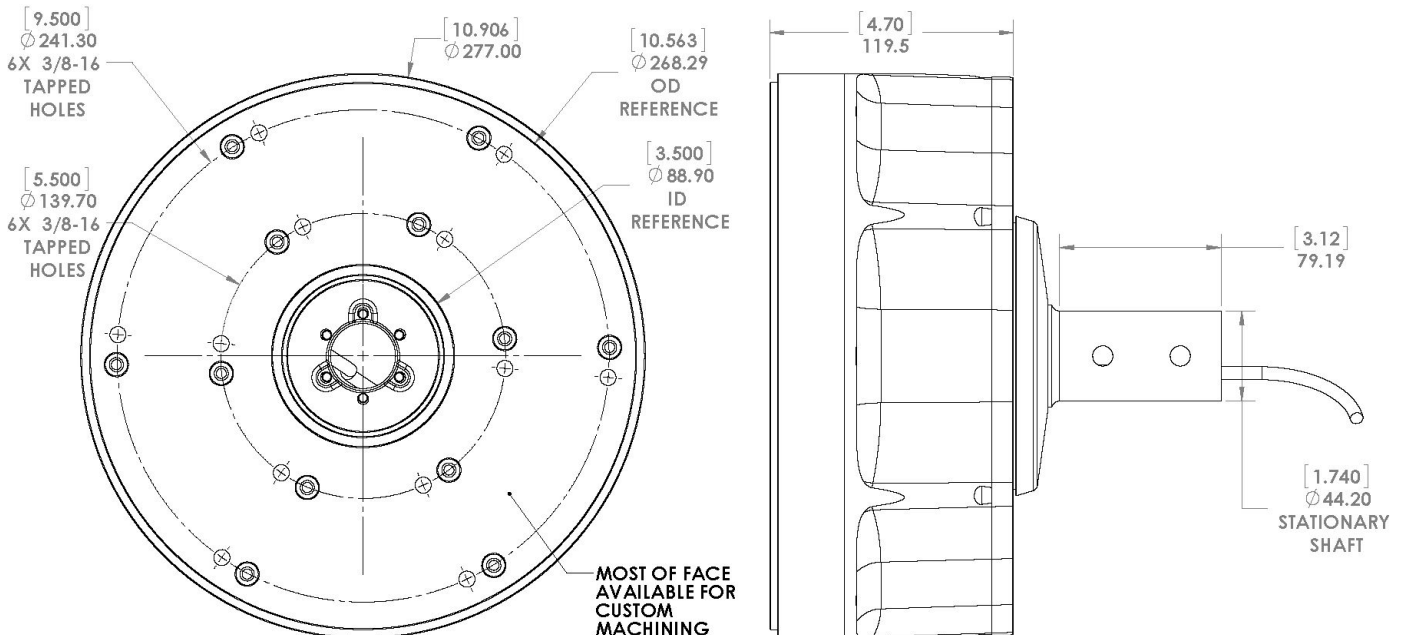
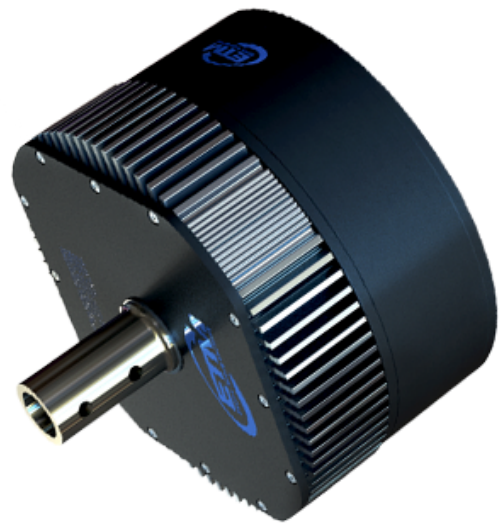


# F70 Direct Drive Motor

Electric Torque Machines (ETM) provides direct drive solutions for demanding applications. ETM manufactures cost effective, high efficiency, high continuous torque, direct drive motors optimized for low speed performance.

## Advantages:

- ETM motors provide a **10X** **continuous torque** advantage over AC induction motors, 3-6X over BLDC motors.
- Enables low cost, compact, lightweight, gearless drive.
- Direct drive eliminates gearbox cost, losses and contamination risk due to oil leaks.
- High efficiency under load at low RPM.





## F70 Direct Drive Motor

Specifications		
Continuous Stall Torque (Ambient 25°C, Max Motor Surface Temp = 70°C)	N·m	77
	ft·lb	57
Max Continuous Power @ 250RPM (Ambient 25°C, Max Motor Surface Temp = 70°C)	W	1345
	hp	1.8
Max Continuous No Load Speed	rad/s	42
	RPM	400
Weight	kg	19
	lb	44
Motor Constant (At Continuous Stall Torque)	N·m/√W	7.0
	ft·lb/√W	5.2
Torque Constant (At Continuous Stall Torque)	N·m/A <sub>pk</sub>	4.5
	ft·lb/A <sub>pk</sub>	3.3
BEMF Constant	V <sub>rms</sub> /kRPM	435
Resistance	mΩ <sub>phs-phs</sub>	518
Inductance	mH <sub>phs-phs</sub>	12
Winding Voltage*	VDC	300
Commutation Sensor	Available with Halls	
Available with Integrated Controller		

\* Other winding voltages available.