

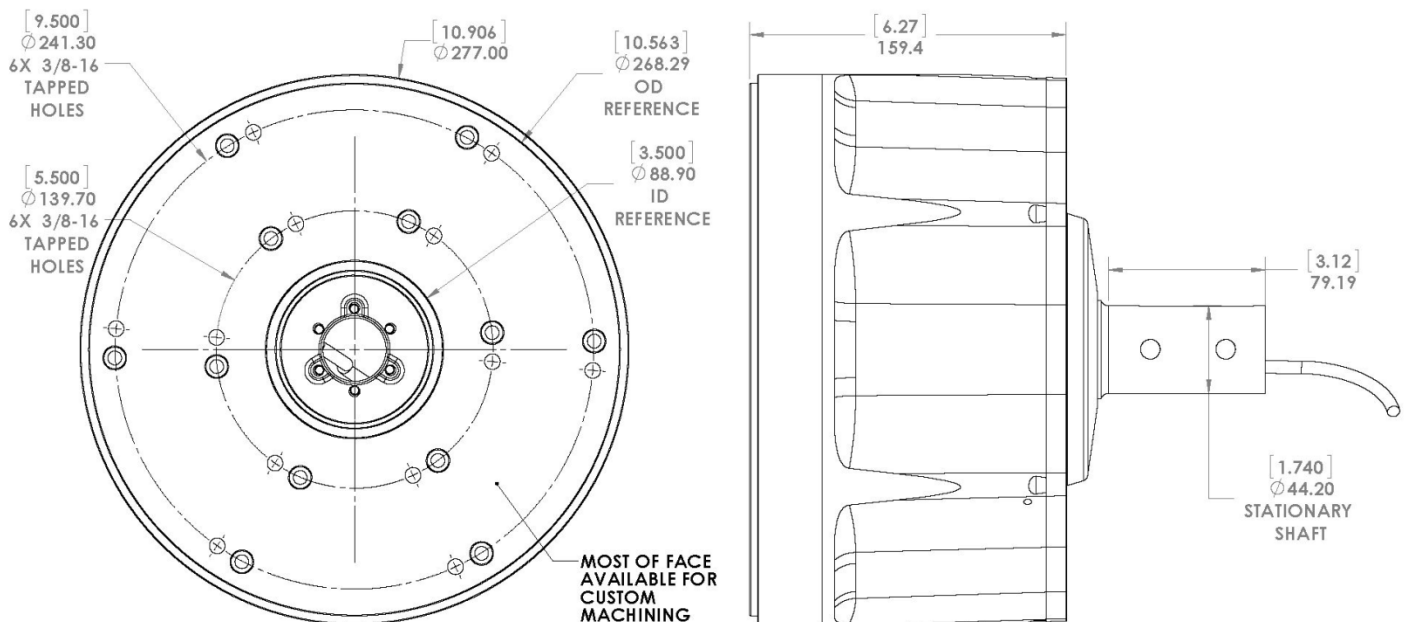
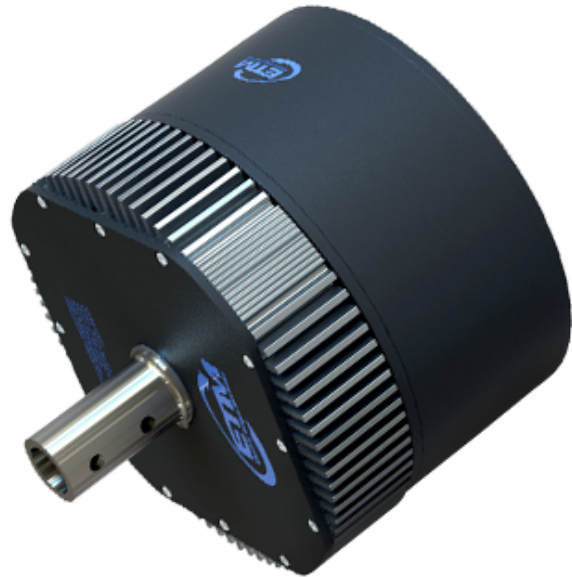


F170 Direct Drive Motor

Electric Torque Machines (ETM) provides direct drive solutions for demanding applications. ETM manufactures high efficiency, high continuous torque, direct drive motors optimized for low speed performance.

Advantages:

- ETM proprietary motors provide a **10X continuous torque** advantage over AC induction motors, 3-6X over BLDC motors.
- Enables compact, lightweight, gearless drive.
- Direct drive eliminates gearbox cost, losses and contamination risk due to oil leaks.
- High efficiency under load at low RPM.





F170 Direct Drive Motor

Specifications		
Continuous Stall Torque (Ambient 25°C, Max Motor Surface Temp = 70°C)	N·m	200
	ft·lb	148
Max Continuous Power @ 180RPM (Ambient 25°C, Max Motor Surface Temp = 70°C)	W	2500
	hp	3.4
Max Continuous No Load Speed	rad/s	30
	RPM	285
Weight	kg	29
	lb	64
Motor Constant (At Continuous Stall Torque)	N·m/√W	15.2
	ft·lb/√W	11.2
Torque Constant (At Continuous Stall Torque)	N·m/A _{pk}	8.2
	ft·lb/A _{pk}	6.0
BEMF Constant	V _{pk} /kRPM	880
Resistance	mΩ _{phs-phs}	380
Inductance	mH _{phs-phs}	20
Winding Voltage*	VDC	160
Commutation Sensor	Available with Halls	
Available with Integrated Controller		

* Other winding voltages available.