

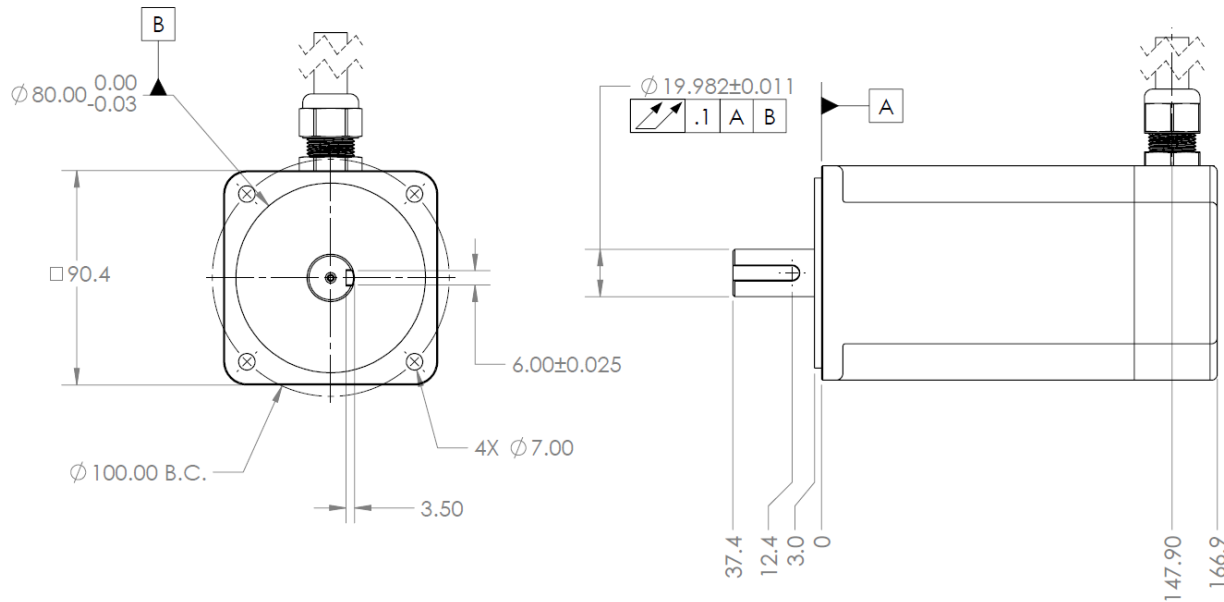
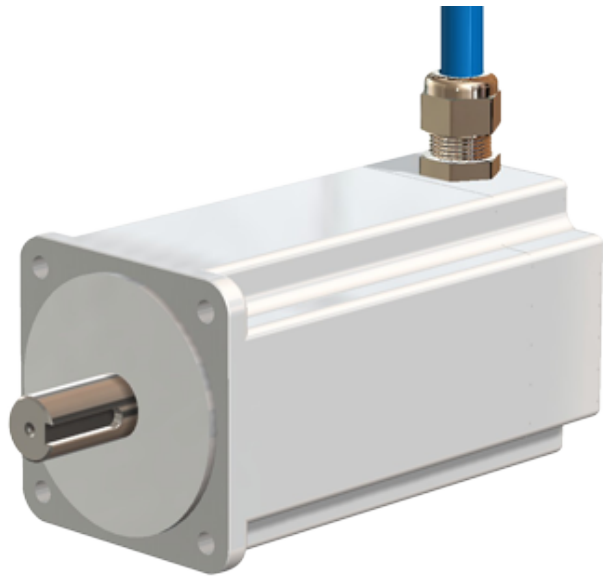


# M100-H Direct Drive Motor

Electric Torque Machines (ETM) provides direct drive solutions for demanding applications. ETM manufactures high efficiency, high continuous torque, direct drive motors.

## Features and Benefits:

- ETM proprietary motors provide a **10X** **continuous torque** advantage over AC induction motors, 3-6X over BLDC motors
- Direct drive enables compact, lightweight, efficient, low maintenance system
- High efficiency under load at low RPM
- Compatible with standard BLDC drives
- IP67
- Smooth, hygienic white epoxy exterior
- Food grade lubricants



All Dimensions in mm.



## M100-H Direct Drive Motor

General Specifications		
Continuous Stall Torque (Ambient 25°C, Max Motor Surface Temperature = 85°C)	N·m	7.0
	ft·lb	5.2
Peak Torque (80% of Linear $k_T$ )	N·m	11
	ft·lb	8.1
Max Continuous Power (at 1000 RPM and 4.5 N·m)	W	530
	hp	0.71
Max Continuous Speed	RPM	1600
Motor Efficiency (at Max Continuous Power)	92%	
Rotor Inertia	kg·cm <sup>2</sup>	2.6
Weight (Entire Motor)	kg	3.6
	lb	8.0
Motor Constant (At Continuous Torque and Max Surface Temp. of 85°C)	N·m/ $\sqrt{W}$	1.0
	ft·lb/ $\sqrt{W}$	0.76
Winding Specifications		
Bus Voltage	$V_{DC}$	350
Phase Current at Continuous Torque	$A_{rms}$	5.8
Phase Current at Peak Torque	$A_{rms}$	10
Torque Constant (at Continuous Stall Torque)	N·m/ $A_{rms}$	1.2
BEMF Constant	$V_{pk(L-L)}/kRPM$	140
Resistance	$\Omega_{(L-L)}$	1.2
Inductance	mH <sub>(L-L)</sub>	9.0



# M100-H Direct Drive Motor

